

TM Site:

Description:

11-042NS

ROUTE 1, 0.4 km NORTH OF ROUTE 1A (GOLDSTREAM AVENUE), LANGFORD

Station: 55200S

Survey: 5520

▲ - Short Count Post

□ - TRADAS Traffic Measurement Site

■ - Loops

① - Channels

■ - Junction Box

A - Detectors

PHOTOLOG

YEAR: 1999

HIGHWAY: H1

IMAGE NUMBER: 1771

SHOWS LOOPS:

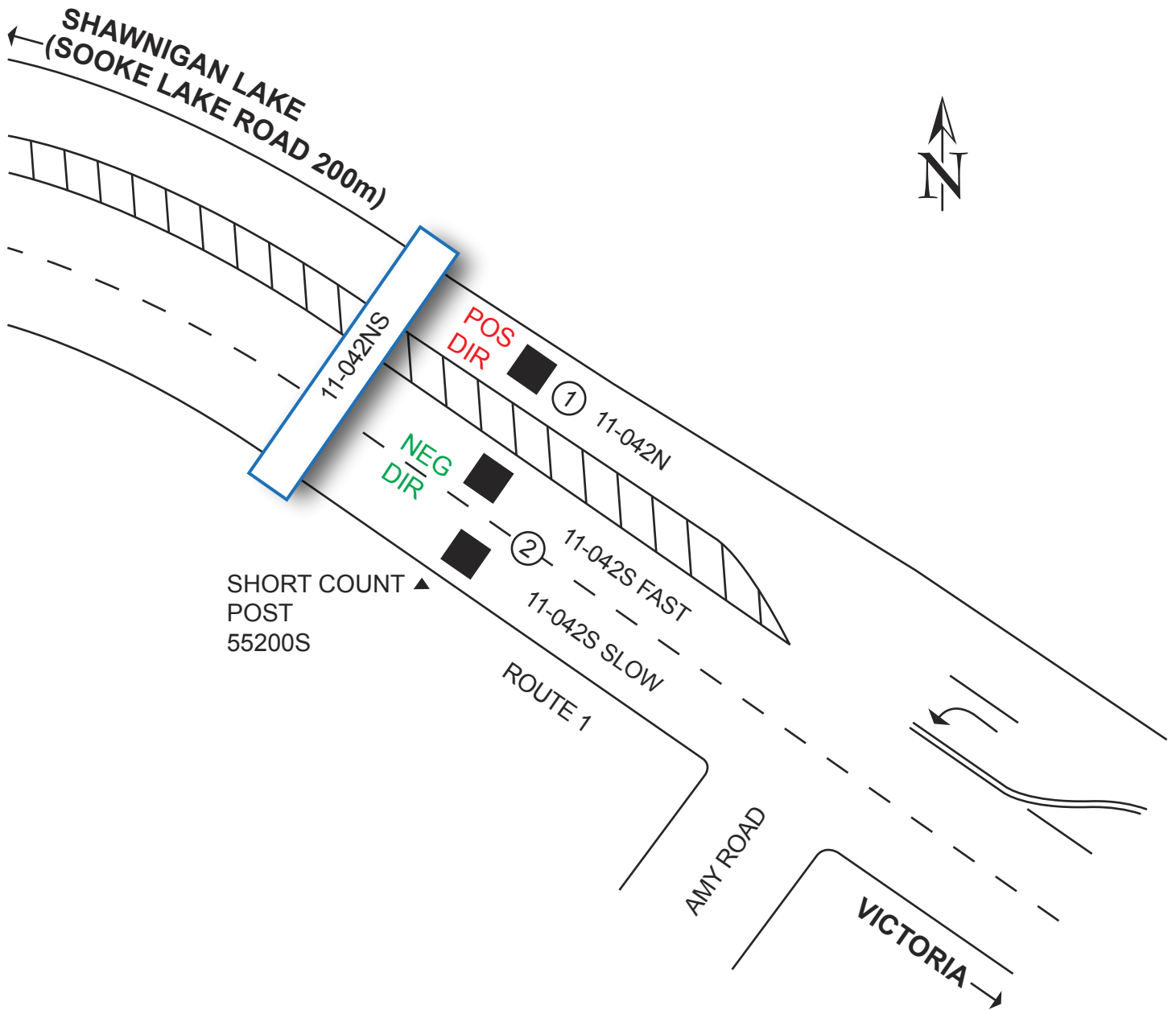
YES

NO

GPS: N 48° 27'33.95"

W 123° 32'26.46"

± 200 metres



NOT TO SCALE

Highway Planning Branch
TRANHighway Planning@gov.bc.ca

Revised Date: February / 2006
Version 3-A