

**TM Site:**

**Description:**

17-019E ROUTE 1, 0.2 km WEST OF ROUTE 11, ABBOTSFORD (SUMAS WAY I/C) (COMP)

17-019W ROUTE 1, 0.2 km WEST OF ROUTE 11, ABBOTSFORD (SUMAS WAY I/C) (COMP)

**Station:** 50760S

50762S

**Survey:** 5076

▲ - Short Count Post

□ - TRADAS Traffic Measurement Site

■ - Loops

① - Channels

■ - Junction Box

A - Detectors

**PHOTOLOG**

YEAR: 2005

HIGHWAY: H1

IMAGE NUMBER: 204

SHOWS LOOPS:

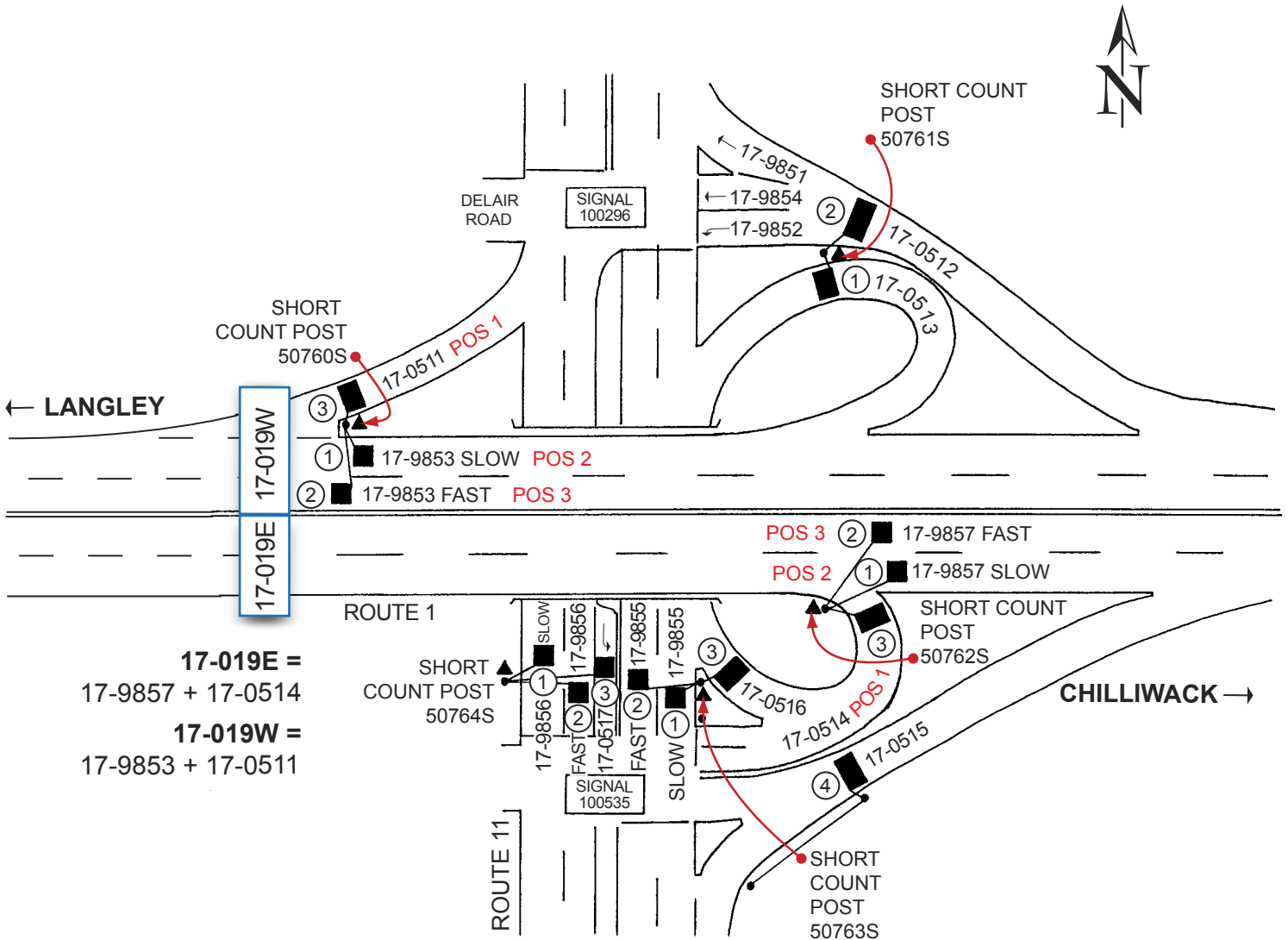
YES

NO

GPS: N 49° 2'0.4"

W 122° 16'8.2"

± 200 metres



NOT TO SCALE

Highway Planning Branch  
 TRANHighway Planning@gov.bc.ca

Revised Date: November / 2006  
 Version 1-A