

Appendix 500.4

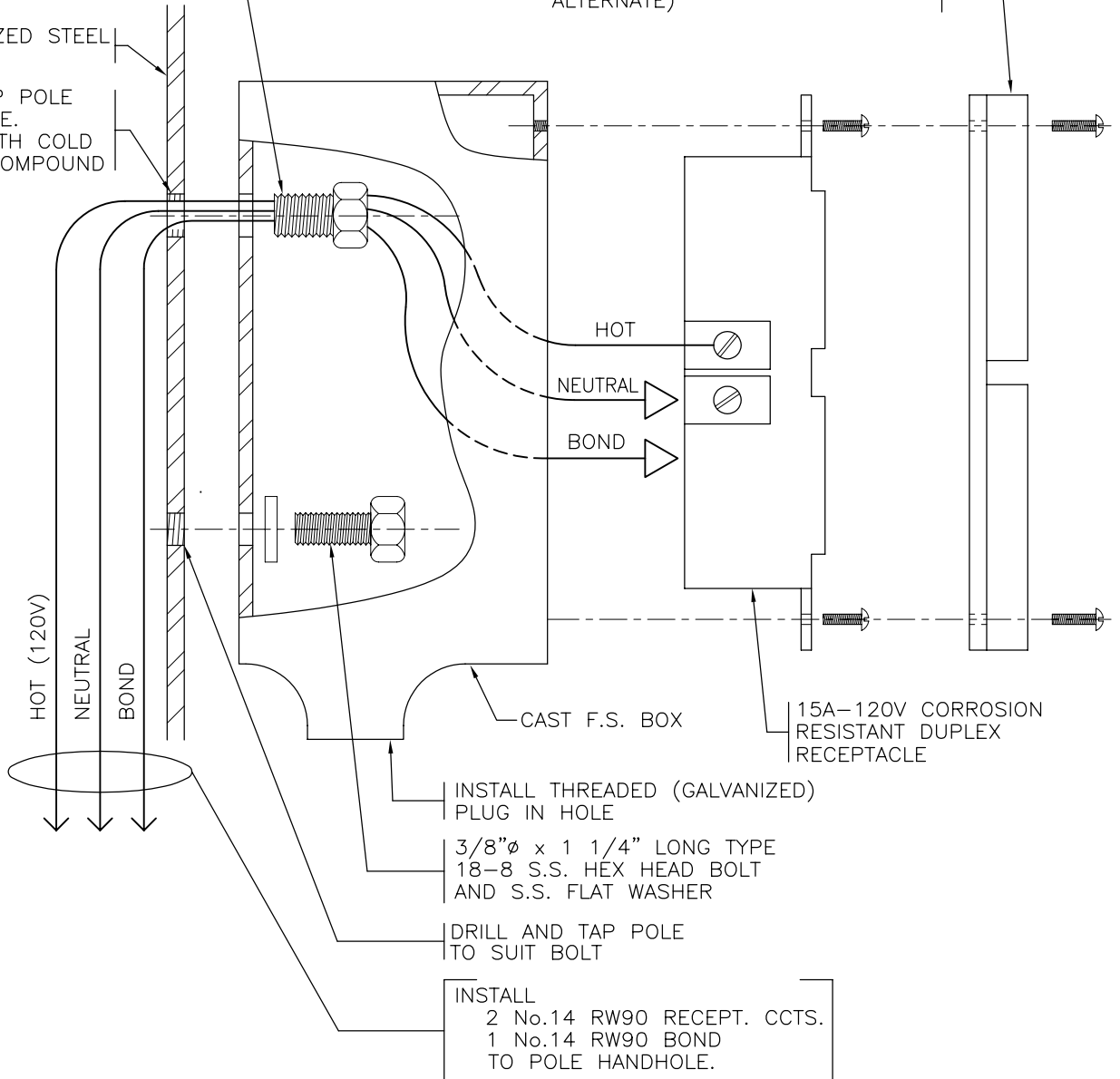
Receptacle Installation Details

1/2"Ø INSULATED CHASE NIPPLE (GALVANIZED)

GALVANIZED STEEL POLE

DRILL AND TAP POLE TO SUIT NIPPLE. COAT HOLE WITH COLD GALVANIZING COMPOUND

DOUBLE SPRING DOOR COVERS FOR WET LOCATIONS (CROUSE HINDS No. WLRD-1 OR APPROVED ALTERNATE)



HOT (120V)
NEUTRAL
BOND

HOT

NEUTRAL

BOND

CAST F.S. BOX

15A-120V CORROSION RESISTANT DUPLEX RECEPTACLE

INSTALL THREADED (GALVANIZED) PLUG IN HOLE

3/8"Ø x 1 1/4" LONG TYPE 18-8 S.S. HEX HEAD BOLT AND S.S. FLAT WASHER

DRILL AND TAP POLE TO SUIT BOLT

INSTALL
2 No.14 RW90 RECEPT. CCTS.
1 No.14 RW90 BOND
TO POLE HANDHOLE.

NOTES

1. RECEPTACLE MOUNTING HEIGHT AND ORIENTATION ON POLE SHALL BE NOTED ON THE PLANS OR SHALL BE PROVIDED BY THE MINISTRY REPRESENTATIVE.
2. FUSE RECEPTACLE CIRCUITS, WITH A 10AMP FUSE, IN THE HANDHOLE AT THE BASE OF POLE. (SEE DRAWING SP235-2.5.5)
3. RECEPTACLES SHALL NOT BE INSTALLED ON POLES WITHIN 50m OF A SIGNALIZED INTERSECTION AND SHALL NOT BE UNDER ANY CIRCUMSTANCES BE INSTALLED ON TRAFFIC SIGNAL OR SIGN POLES.
4. S.S. INDICATES STAINLESS STEEL



Province of British Columbia

Ministry of Transportation and Highways

NOT TO SCALE

No.	Revision	Date	DUPLEX RECEPTACLE INSTALLATION DETAILS	
F				
E				
D			Date	Approved
C			24 NOV 94	A SADLER (Signature on File)
B				Senior Electrical Engineer
A				

DRAWING No.
ML-2.1