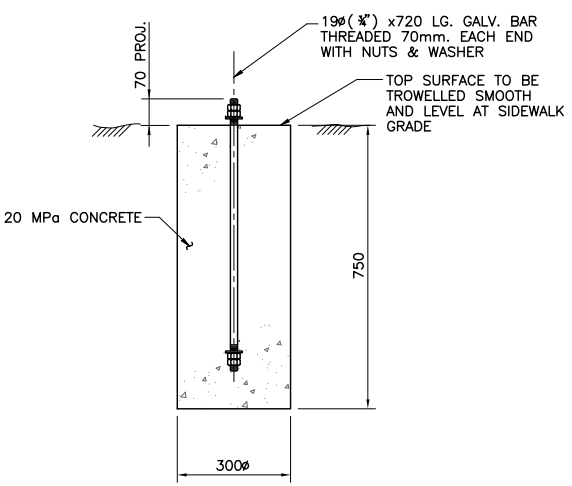
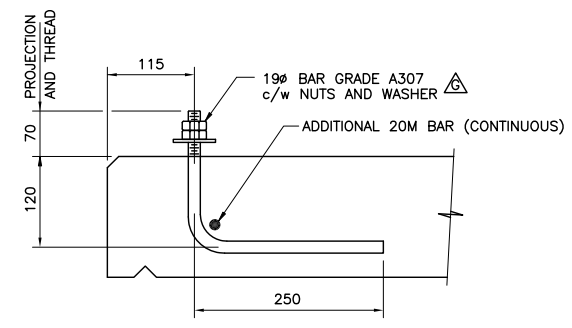


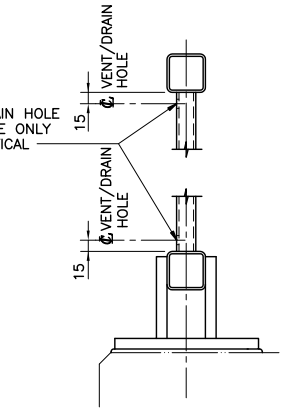
SECTION B
SCALE 1:10



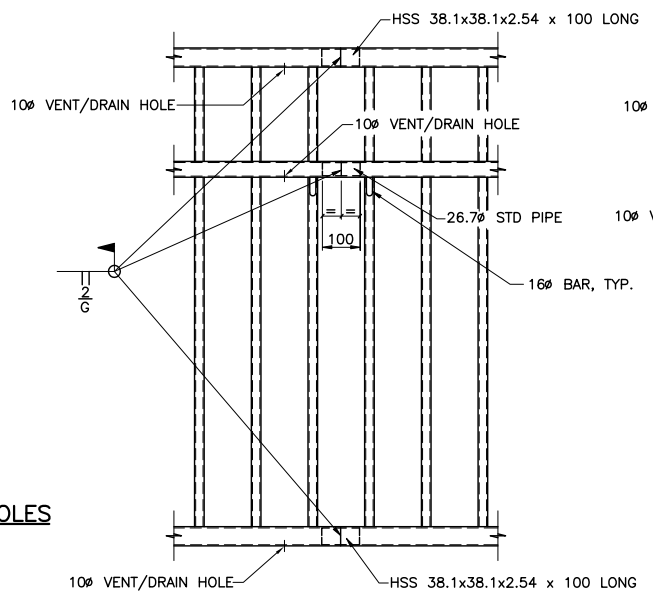
OFF-BRIDGE FENCE BRACKET ANCHOR DETAIL



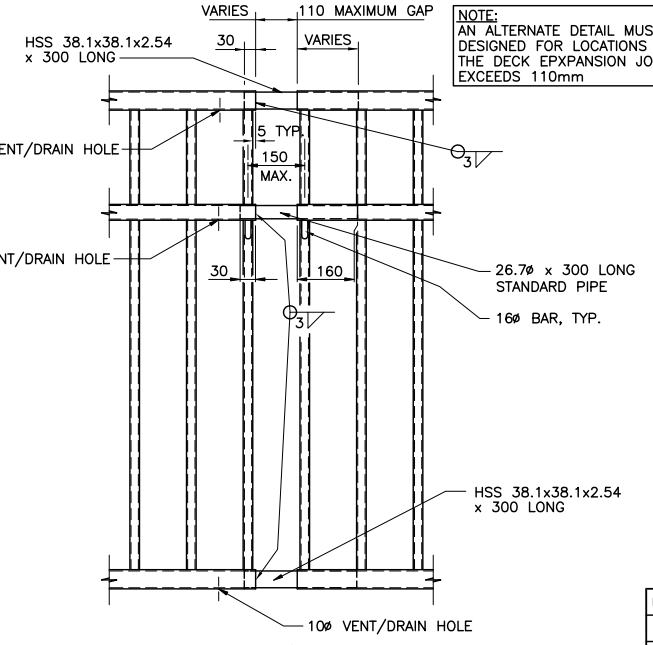
FENCE BRACKET ANCHOR
SCALE 1:5



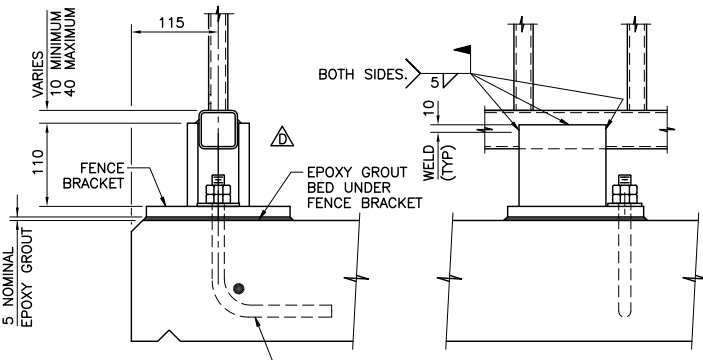
DETAIL AT VENT/RAIN HOLES IN VERTICALS
SCALE 1:5



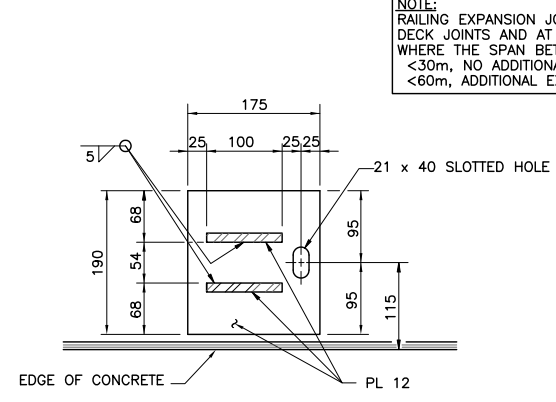
TYPICAL RAIL SPLICE



RAIL EXPANSION JOINT



END VIEW
TYPICAL DETAIL AT FENCE BRACKET
SCALE 1:5



SECTION A
SCALE 1:5

- NOTES:**
- FABRICATION TO BE IN ACCORDANCE WITH M.O.T. STANDARD SPECIFICATIONS FOR HIGHWAY CONSTRUCTION, SECTION 422, 'MISCELLANEOUS STEELWORK'.
 - STEEL SHALL CONFORM TO:
 - ALL HSS TUBING TO BE CAN/CSA G40.21, GRADE 350W OR ASTM A500 GRADE C.
 - ALL OTHER STEEL TO BE CAN/CSA G40.21, GRADE 300W
 - FENCE SECTIONS, BRACKETS AND ANCHORS TO BE GALVANIZED AFTER FABRICATION.
 - GALVANIZING SHALL CONFORM TO CAN/CSA G164M.
 - FIELD CONNECTIONS TO BE WELDED.
 - RAIL ELEMENTS TO BE USED IN CURVES HAVING A RADIUS OF 300m OR LESS SHALL BE SHOP-FORMED TO THE REQUIRED CURVATURE.
 - FENCE BRACKETS ARE TO BE INSTALLED ON A 5 mm NOMINAL THICK THIXOTROPIC EPOXY LEVELLING COURSE TO ENSURE A COMPLETE BEARING SURFACE.
 - FOR FENCES ON PEDESTRIAN OVERPASS RAMP, THE ENDS OF PANELS AND VERTICAL TUBES SHALL BE PLUMB.

Rev	Date	Description	Init
C	96/02/18	VENT/RAIN HOLES	BGDC
D	00/11/21	END VIEW - TYPICAL DETAIL AT FENCE BRACKET	GDW
E	JUNE 05	REVISED MINISTRY BORDER	WHK
F	DEC 05	GENERAL REVISIONS	DRM
G	JUNE 10	ANCHOR SIZE, EXP. JOINT SPACING	WHK

REVISIONS



STANDARD STEEL BICYCLE FENCE

AUTHORIZED BY	
ORIGINAL SIGNED BY P. BRETT DIRECTOR OF BRIDGE ENGINEERING DATE 1997-04-21	ORIGINAL SIGNED BY M. CLARK CHIEF HIGHWAY ENGINEER DATE 1997-04-21

PREPARED UNDER THE DIRECTION OF ORIGINAL SIGNED BY K. W. HO ENGINEER OF RECORD SENIOR BRIDGE DESIGN ENGINEER DATE 1997-04-21	DESIGNED C.W./K.B. DATE APR. 92	CHECKED J.E.S. DATE 95-03-20	SCALE AS NOTED
FILE No.	PROJECT No.	REG.	DRAWING No. 2891-2